



City of  
Jonesville

265 E. Chicago Street, Jonesville, MI 49250

(517) 849-2104  
(517) 849-9037 Fax  
[www.jonesville.org](http://www.jonesville.org)

**CITY OF JONESVILLE  
PLANNING COMMISSION AGENDA  
WEDNESDAY, JUNE 14, 2023, 7:00 p.m.  
JONESVILLE CITY HALL, 265 E. CHICAGO STREET**

- 1. CALL TO ORDER / PLEDGE OF ALLEGIANCE / MOMENT OF SILENCE**
- 2. PUBLIC COMMENT**
- 3. APPROVAL OF AGENDA**
- 4. APPROVAL OF MINUTES**
  - A. May 10, 2023 Meeting
- 5. PUBLIC HEARING AND SUBSEQUENT ACTION**
  - A. None
- 6. NEW BUSINESS**
  - A. Recreation Master Plan Update
- 7. OTHER BUSINESS**
  - A. Project Updates
- 8. ADJOURNMENT - Next meeting Wednesday, July 27, 2023 at 7:00 pm**

**[Discussion Item]**

**CITY OF JONESVILLE  
PLANNING COMMISSION  
Minutes of May 10, 2023**

A City of Jonesville Planning Commission meeting was held on Wednesday, March 10, 2023 at the Jonesville City Hall, 265 E Chicago Street, Jonesville, MI. Chair Christine Bowman called the meeting to order at 6:57 p.m.

Present: Christine Bowman, Brenda Guyse, Charles Crouch, Marty Ethridge, Ryan Scholfield and Annette Sands.

Absent: Jim Ackerson.

Also Present: Jeff Gray, Mike Kyser, Jacob Hurt (Region 2 Planning Commission).

Annette Sands led the Pledge of Allegiance and the moment of silence.

The Oath of Office was administered to Ryan Scholfield by Clerk Means.

A motion was made by Brenda Guyse and supported by Annette Sands to approve the agenda as presented. All in favor. Absent: Jim Ackerson. Motion carried.

Charles Crouch made a motion and was supported by Brenda Guyse to approve the minutes from March 8, 2023. All in favor. Absent: Jim Ackerson. Motion carried.

Jacob Hurt of R2PC provided a Recreation Plan Update and discussion was held regarding the draft plan text that was prepared. Mr. Hurt will provide a revised draft plan at the next Planning Commission meeting.

A motion was made by Brenda Guyse and supported by Charles Crouch to adopt the Capital Improvement Plan and recommend City Council approval, as it is consistent with the community planning initiatives. All in favor. Absent: Jim Ackerson. Motion carried.

Manager Gray provided Updates.

The next meeting is scheduled for June 14, 2023 at 7:00 p.m.

The meeting was adjourned at 7:58 p.m.

Submitted by,

Cynthia D. Means  
Clerk



City of  
Jonesville

265 E. Chicago Street, Jonesville, MI 49250

(517) 849-2104  
(517) 849-9037 Fax  
[www.jonesville.org](http://www.jonesville.org)

To: Jonesville Planning Commission  
From: Jeffrey M. Gray, City Manager *JMG*  
Date: June 9, 2023  
Re: Manager Report and Recommendations – June 14, 2023 Planning Commission Meeting

**6. A. Recreation Master Plan Update**

**[Discussion]**

This agenda item is reserved for discussion of the draft update to the Recreation Master Plan. A revised draft is attached, along with comments from Jacob Hurt with Region 2 Planning Commission. Mr. Hurt will attend the Planning Commission meeting. Commissioner discussion, comments and questions regarding the draft are encouraged. Your comments will be used to refine the draft, as we work toward presentation of the proposed plan to the public. *Please refer to the email correspondence from Jacob Hurt and the draft update to the Recreation Master Plan.*

**7. A. Project Updates**

This section of the agenda is reserved for an update on current and pending projects in the City.

## Jeff Gray

---

**From:** Jacob Hurt <jhurt@mijackson.org>  
**Sent:** Wednesday, June 7, 2023 10:29 PM  
**To:** Jeff Gray  
**Subject:** Recreation Plan Draft for June 14 PC Meeting  
**Attachments:** JonesvilleRecPlan\_InterimDraft\_06\_07\_2023.pdf

Hey Jeff,

I've attached an updated draft of chapters 1 – 4 for the plan commission meeting next week. It has been reformatted to landscape orientation to be included as an appendix to the 2019 Master Plan in a consistent manner to that plan.

A few notes on this draft:

- Overall it's been "cleaned up" but there are still a few wonky formatting issues, such as the need for blank pages to make it flow better, but it's still a draft.
- Recreation structure in Chapter 2 has been updated per your 5/10/23 memo.
- Chapter 3 has been updated in sections per your 5/10/23 memo, including updated businesses and a few programmatic offerings. The remaining programs need verification as to their current status. I still need to update the Trail section in this chapter. All maps are in the process of being updated.
- Chapter 4 has been updated per your 5/10/23 memo. It now includes a summary/analysis of the Public Input Session and the Stakeholder Interviews. All public input, including the survey, and stakeholder interviews will also be provided in Appendix B currently being developed.
- That leaves Chapter 5 Goals and Objectives and an Action Plan based on the goals to be written, as well as a couple of appendices.

I will continue to work on updating the document up until next week's plan commission meeting. I will bring or email you any additional updates the day of the meeting.

Let me know if you have any questions.

Thanks,

Jacob

### JACOB HURT

*Executive Director*

[jhurt@mijackson.org](mailto:jhurt@mijackson.org)

Office: (517) 788-4426

Direct: (517) 768-6705

Mobile: (517) 513-9858

**Region 2**  
**PLANNING COMMISSION**  
Serving Hillsdale, Jackson & Lenawee Counties



*Carl Fast Memorial Park*

## Chapter 1

# **Community Description**

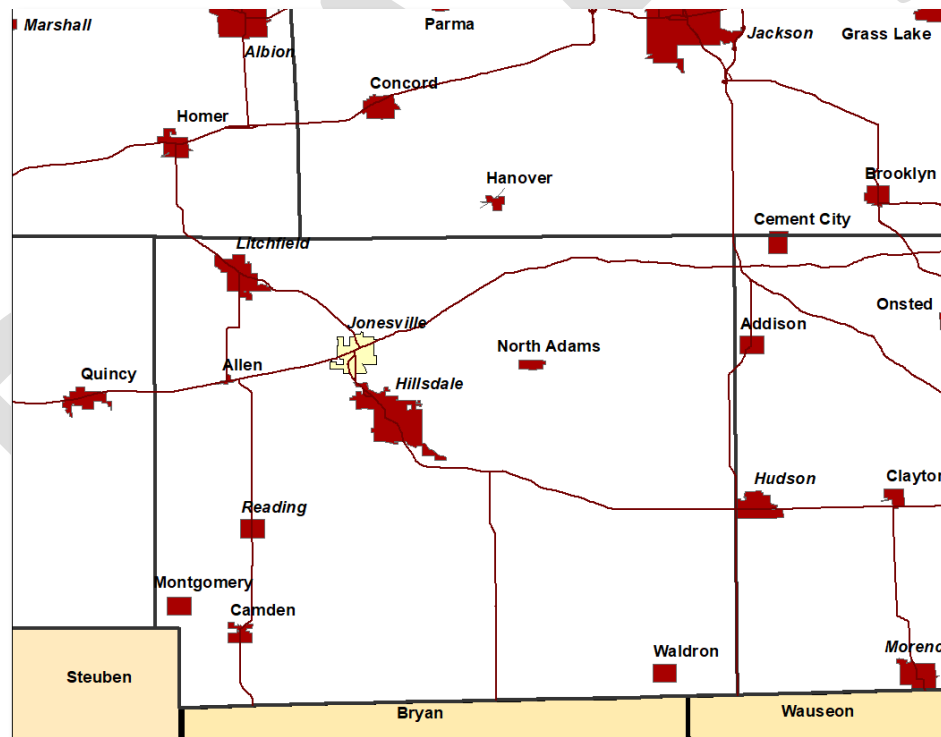
City of Jonesville 2023-2028 Recreation Plan

DRAFT

A priority of the City of Jonesville is to develop and implement a recreation plan which responds to the recreational desires of their citizens and to plan for enhancements to parks and recreation programs. A sincere effort was spent in developing this plan which represents the projected needs for recreation facilities and services in Jonesville from 2023-2028. For example, the plan provides a clear picture of the recreational opportunities available to residents regardless of who provides them. Nontraditional recreation opportunities such as historic districts/structures and shopping opportunities are catalogued as well as traditional parks and recreation facilities.

## Location

The City of Jonesville is located in northwestern Hillsdale County, close to Michigan's border with Northwest Ohio and Northeast Indiana. United States Highway 12 (US-12) and Michigan Highway 99 (M-99) traverse the community. Those thoroughfares provide access to the urbanized areas of Jackson, Ann Arbor, Detroit, Battle Creek, Kalamazoo, and Grand Rapids.



The City of Jonesville has an area of 2.9 square miles, and is surrounded by the following local units of government:

Nearby Local Units of Government	
<b>City of Hillsdale</b>	<b>Hillsdale Township</b>
<b>Adams Township</b>	<b>Litchfield Township</b>
<b>Allen Township</b>	<b>Moscow Township</b>
<b>Fayette Township</b>	<b>Scipio Township</b>

### A Brief Socioeconomic Summary

The demographic composition of the City of Jonesville has an effect upon their recreational needs. Pertinent demographic components are listed below along with a brief paragraph describing the local situation. Each of the components is described in greater detail in Appendix A of this document.

- **Population History & Projections**

The 2020 population for the City of Jonesville was 2,176. The population of the City increased steadily between 1940 and 2000 although the population has decreased from 2,337 in 2000 to 2,176 in 2020. Based upon those patterns, the population in 2030 is projected to be approximately 2,260. *(Source: US Census Bureau)*

- **Age & Gender of the Population**

The groups defined as School Age (people aged 5 to 17) and Young Adult (people aged 25 to 44) comprised an estimated 22.9 percent and 21.9 percent, respectively, of Jonesville's population during the 2016 – 2021 time period. Adult (people aged 45 to 64) and Preschool (people aged 0 to 4) comprised an estimated 20.2 percent and 13.2 percent, respectively, of the population during that same time period. The smallest age groups during this time period were Older Adult (people aged 65 and older) and College Age (people aged 20 to 24), those being 13.8 percent and 6.4 percent, respectively. An estimated 48.6 percent of Jonesville residents were male. *(Source: American Community Survey)*



- **Household & Family Composition**

There were an estimated 897 households in Jonesville during the 2016 – 2021 time period. Families comprised an estimated 64 percent of these households, while an estimated 28 percent of households were comprised of people living alone. The average household size in Jonesville during the time period was 2.73 people and the average family size was 3.51 people. *(Source: American Community Survey)*

- **Racial & Ethnic Composition**

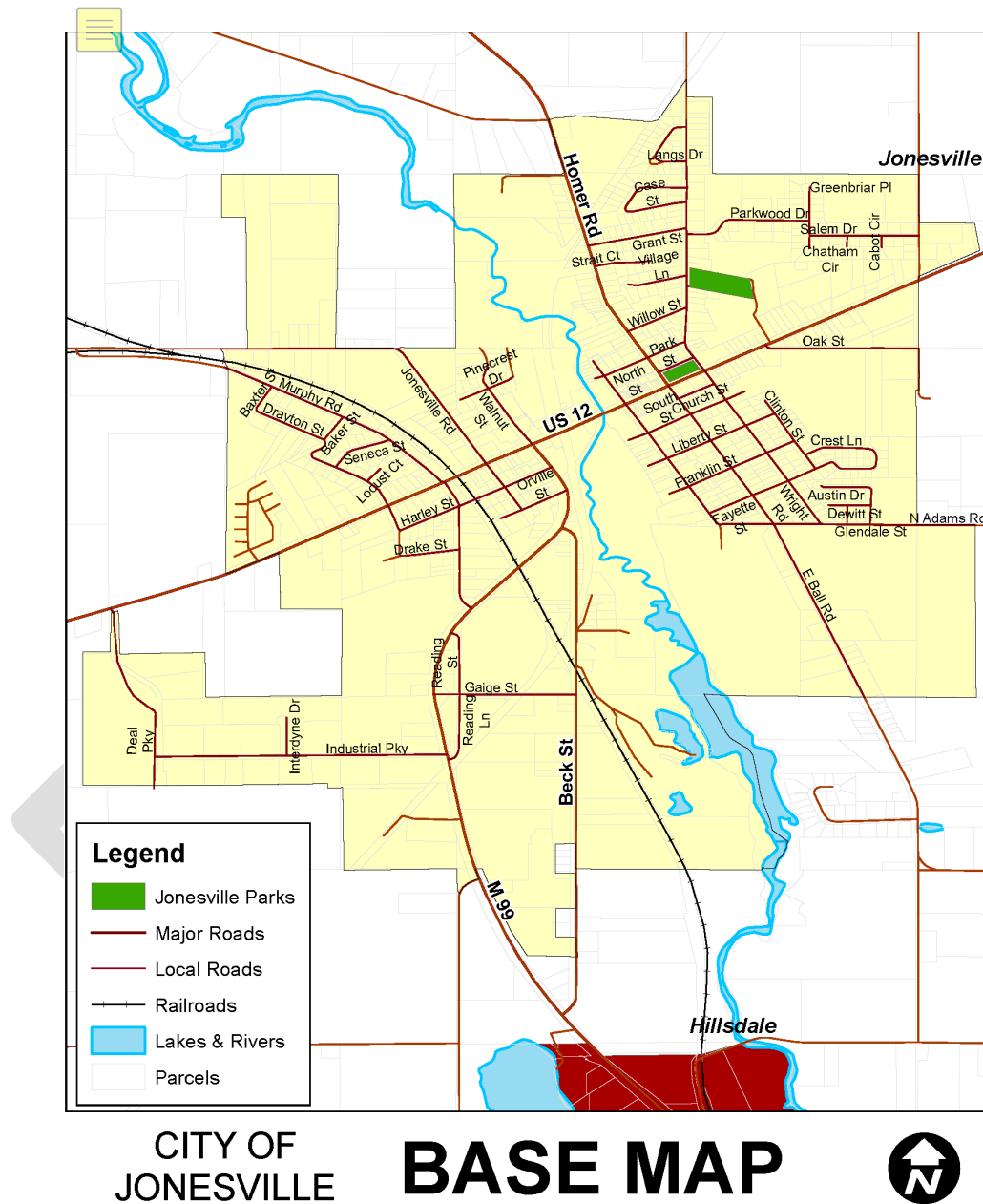
Race and ethnicity are not significant components of Jonesville's population given its homogeneity. Racial and ethnic minorities comprised an estimated 8.7 percent of city residents. *(Source: American Community Survey)*

- **Disabilities of Residents**

About 17.9 percent of Jonesville residents have some sort of disability, higher than Michigan's 13.9 percent. An estimated 2.3 percent of Jonesville residents between the ages of 5 and 17 had some type of disability during the 2016 – 2021 period, however, it was estimated that zero percent had an ambulatory disability. An estimated 19.3 percent of residents between the ages of 18 and 64 had some type of disability during the same time period with an estimated 10.7 percent with an ambulatory disability. An estimated 37.7 percent of Jonesville residents at least 65 years old had some type of disability including an estimated 27.1 percent with an ambulatory disability. *(Source: American Community Survey)*

- **Income**

The estimated median income for Jonesville households (\$45,329) was less than that for Hillsdale County households (\$54,110), Michigan households (\$63,498) and nationally (\$69,717) during the 2016 – 2021 time period. The estimated median family income for Jonesville families (\$52,875) was less than that for all Hillsdale County households (\$65,351), Michigan households (\$80,523) and nationwide (\$85,806). *(Source: American Community Survey)*



## The Health of Residents

According to local health department estimates collected for the annual Michigan Behavioral Risk Factor Survey (MiBRF) conducted from 2019 through 2021, an estimated 40.2% of Branch, Hillsdale and St. Joseph counties residents were obese and another estimated 38.5% were overweight.<sup>1</sup> “Overweight and obesity substantially increase the risk for cardiovascular disease, type 2 diabetes, hypertension, lipid disorders, stroke, gallbladder disease, osteoarthritis, sleep apnea, respiratory problems, psychological disorders, stress, incontinence, and cancers of the endometrium, breast, prostate and colon,” according to that report.<sup>2</sup>

A couple factors of particular relevance to community growth, development, and planning contribute to unhealthy weight:

- “Inadequate community infrastructure limits the ability of people to be active. These include lack of accessible indoor and outdoor exercise facilities, neighborhood sidewalks, walking paths, and bicycle trails. Additionally, inclement weather, lack of adequate recreational opportunities, fear of unsafe neighborhoods, and unattractive/unpleasant local environments may prevent people from exercising.”
- “Programs and policies are necessary to promote smart community growth and the establishment of urban and rural environments supportive of physical activity. Active community environments provide access to safe favorable conditions for physical activity and promote the development of social support networks that encourage activity.”

The report recommends cooperation among state and local units of government and residents in the promotion of active environments, including the following actions.

- “Develop walkable communities by widening and maintaining or building sidewalks, safe roadway crossings, and aesthetically pleasing areas.”
- “Encourage bicycling by developing, maintaining, and promoting the use of bike paths.”
- “Require [that] all urban planning and re-design incorporate the concepts of active community environments and thereby promote physical activity.”

---

<sup>1</sup> Table 6 of [Health Indicators and Risk Estimates by Community Health Assessment Regions & Local Health Departments | State of Michigan | Selected Tables | Michigan Behavioral Risk Factor Survey | 2019 – 2021](https://www.michigan.gov/mdhhs/-/media/Project/Websites/mdhhs/Keeping-Michigan-Healthy/Communicable-and-Chronic-Diseases/Epidemiology-Services/2019-2021_MiBRFSS_Reg-LHD_Tables.pdf?rev=6b39940c42af4367bc59cf883b4591ac&hash=7C990C3EB31B2FEC702AEFFBFF47C96) ([https://www.michigan.gov/mdhhs/-/media/Project/Websites/mdhhs/Keeping-Michigan-Healthy/Communicable-and-Chronic-Diseases/Epidemiology-Services/2019-2021\\_MiBRFSS\\_Reg-LHD\\_Tables.pdf?rev=6b39940c42af4367bc59cf883b4591ac&hash=7C990C3EB31B2FEC702AEFFBFF47C96](https://www.michigan.gov/mdhhs/-/media/Project/Websites/mdhhs/Keeping-Michigan-Healthy/Communicable-and-Chronic-Diseases/Epidemiology-Services/2019-2021_MiBRFSS_Reg-LHD_Tables.pdf?rev=6b39940c42af4367bc59cf883b4591ac&hash=7C990C3EB31B2FEC702AEFFBFF47C96)).

<sup>2</sup> [Promoting Healthy Weight in Michigan through Physical Activity and Nutrition](#), part of a series entitled “Informing the Debate: Health Policy: Options for Michigan Policymakers”.



*Carl Fast Memorial Park Playground*

## Chapter 2

# **Administrative Structure**

City of Jonesville 2023-2028 Recreation Plan

DRAFT

## Authorization

In response to identified recreation needs, the Jonesville Planning Commission has worked with the Region 2 Planning Commission to develop the *City of Jonesville 2023-2028 Recreation Plan* under the authority of Public Act 156 of 1917 (Recreation and Playgrounds). A copy of PA 156 of 1917 is available online at: <http://www.legislature.mi.gov/jvpdab552soxemek3mee3h55/documents/mcl/pdf/mcl-Act-156-of-1917.pdf>

The City of Jonesville maintains its own parks and recreation committee under the authority of this legislation. The act “authorizes cities, villages, counties, townships and school districts to operate systems of public recreation and playgrounds” (*emphasis added*) and allows them to:

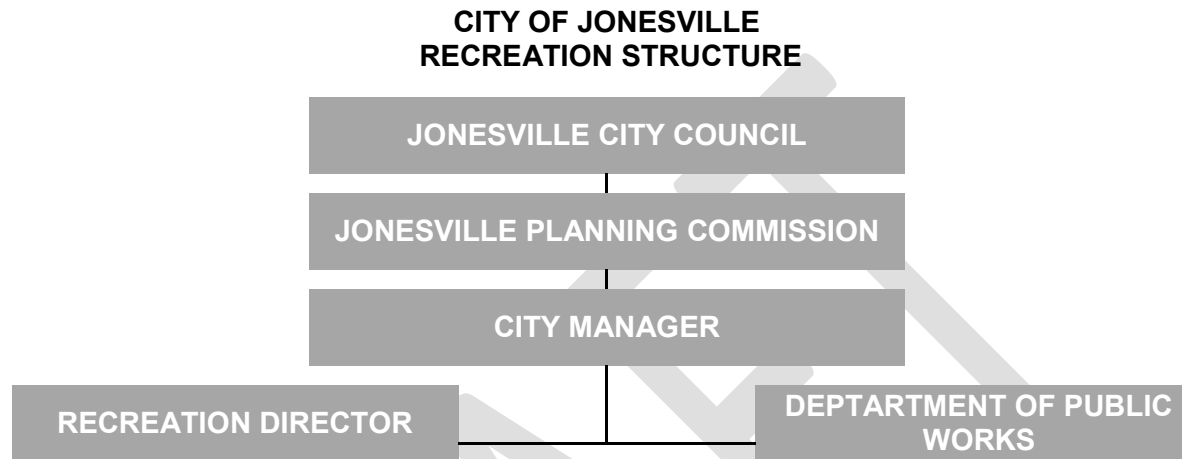
- “Operate a system of public recreation and playgrounds; acquire, equip and maintain land, buildings or other recreational facilities; employ a superintendent of recreation and assistants; vote and expend funds for the operation of such system.”
- “*operate such a system independently or they may cooperate in its conduct in any manner which they may mutually agree; or they may delegate the operation of the system to a recreation board created by any or all of them, and appropriate money, voted for this purpose, to such board*” (*emphasis added*).

The act also allows park systems to operate on “(1) property under its custody and management; (2) other public property;” and “(3) private property, with the consent of the owners.”

## Organizational Structure

The Jonesville City Council, comprised of a Mayor and six Council members, maintains final authority over the City of Jonesville’s recreation programs and facilities. The City Council has tasked the Jonesville Planning Commission with the work of overseeing the development to the *City of Jonesville 2023 – 2028 Recreation Plan*. Recreational programs are administered by the Recreation Director, a function currently performed by the City Clerk as a part-time set of her responsibilities. Parks and recreation maintenance concerns are directed to the City Manager who administers the municipality’s Department of Public Works. The City may also utilize volunteers for specific projects as the need arises.

The following bodies are involved in the provision of municipal recreation:



### Sources of Funding

The City of Jonesville has identified several potential sources of revenue for their recreation facilities and programs:

- General tax fund dollars.
- Grants awarded for specific projects.
- Donations from the general citizenry and philanthropic organizations.

General tax fund dollars are used for the maintenance and programming of City parks and recreation facilities and the cost of producing this plan. Grants are generally awarded for the acquisition of parkland and the development of a park or recreational facility (e.g., trails, playgrounds, picnic shelters, sports facilities, etc.). Donations to be used at the discretion of the City or for a specific facility or program are also accepted. A portion of the local match required of most grants may also come from the general fund or donations.

Grants for parks and recreational facilities are likely to come from several sources:

- *Michigan (DNR) Department of Natural Resources:*

- MDNR Michigan Natural Resources Trust Fund
- MDNR Land and Water Conservation Fund<sup>1</sup>
- *Michigan (MDOT) Department of Transportation:*
  - MDOT Transportation Enhancement Program<sup>1</sup>
- *Hillsdale County Road Commission:*
  - One percent (1%) annual allocation of state transportation (Act 51) funds for non-motorized facilities
- *Parks and Recreation Budgeting:*
  - The parks and recreation budget for the City of Jonesville is used almost entirely for the maintenance and programming of its parks.
  - Capital outlays are also made for projects including the development of this Plan, the preparation of grant applications, and the planning and construction of new recreation facilities.

Relationships with other recreation providers as the City is not the only supplier of parks and recreational opportunities to the residents of Jonesville:

- *Schools:*
  - Jonesville Community Schools is also a major supplier of parks and recreational opportunities to City residents.
  - The Hillsdale County Intermediate School District (which includes Jonesville Community Schools) provides educational services to residents and local school districts.
- *Local, County, State Government and Private Providers:*
  - Hillsdale County and other nearby cities and villages, as well as some townships, maintain parks.

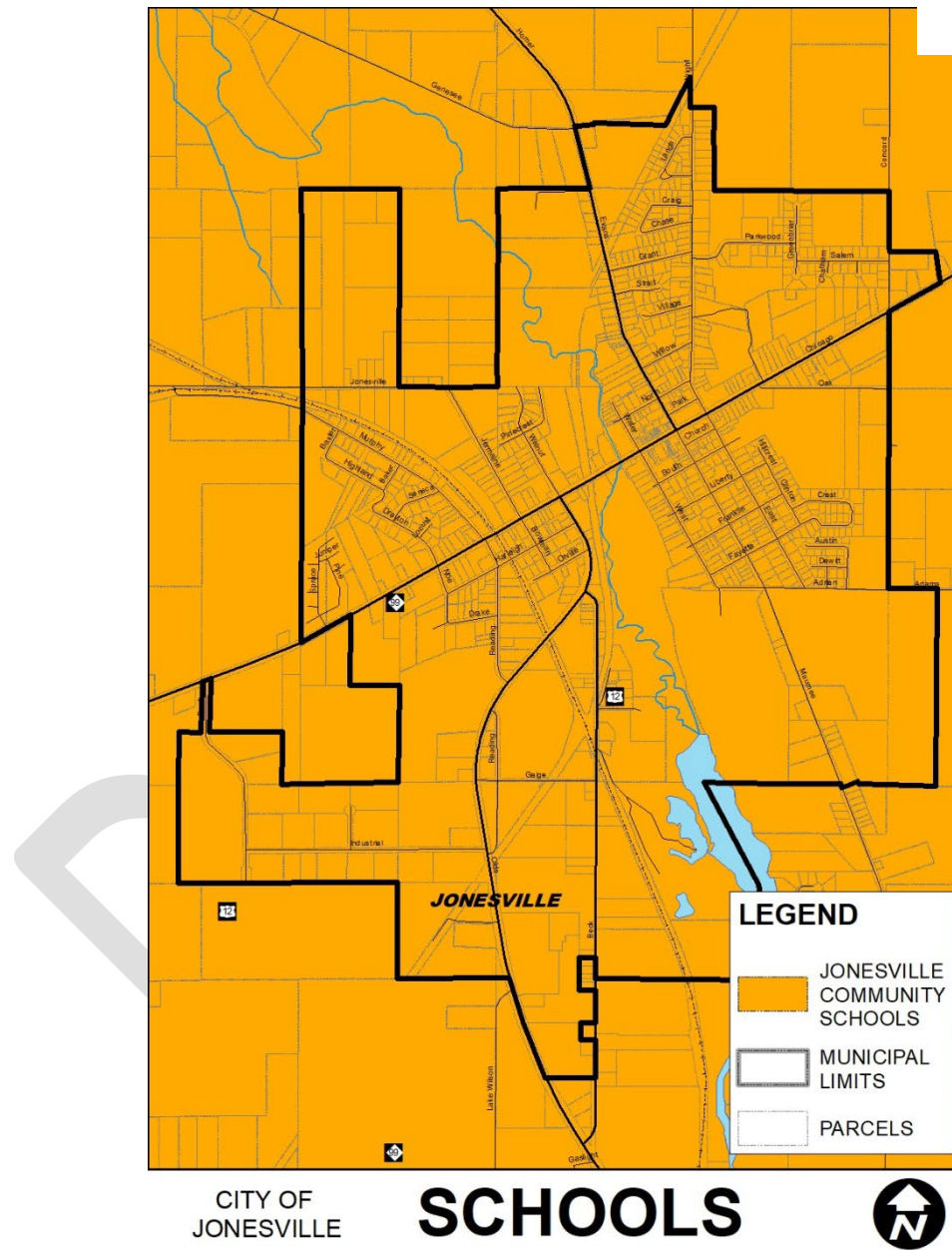
---

<sup>1</sup> This is a Federal program administered locally by the State of Michigan.



- The State of Michigan also provides a variety of recreational facilities in the form of state game, wildlife, and recreation areas; state historic parks; and state parks throughout the State (although none of those facilities are located in the City).
- A variety of private entrepreneurs and quasi-public agencies also provide recreation facilities and programs in and around Jonesville.

Please refer to Chapter 3 for a more detailed description of recreation facilities in the Jonesville area.





*City recreation equipment*

### Chapter 3

## **Recreation and Resource Inventories**

City of Jonesville 2023-2028 Recreation Plan

DRAFT

The recreation inventory is comprised of all the parks and recreation facilities and programs provided in the City of Jonesville, not just those owned and managed by the local units of government. The facilities and programs were identified through local knowledge and review of current and historic documents and maps.

### Local Parks and Recreation Facilities

The City of Jonesville provides a total 6.2 acres of parkland and 1.4 miles of rail trail to its residents. Located in the heart of downtown, Carl Fast Memorial Park functions as part of the Chicago Street (US-12) streetscape. Wright Street Park provides a variety of facilities for more active recreation. The cemetery also provides open space in Jonesville.

City of Jonesville				
	Name	Acres	Facilities	BFA
A	Carl Fast Memorial Park	1.4	Playgrounds; Picnic Tables & Shelter; Clock; Statue; and Benches	2
B	Wright Street Park	4.8	Tennis; Playgrounds; Picnic shelter with bathrooms; Basketball; Baseball; and connecting trail to the high school baseball fields	2
C	Jerry Russell Trail	N/A	A 1.4 mile-long 10-foot wide Multi-Use Recreational Pathway, including an Interpretive Sign, Benches, Trash/Recycling Receptacles, and Plantings	5

Jonesville Community Schools are the institutions of learning for all of Jonesville. However, as a popular schools of choice, children living outside of the district also attend Jonesville Community Schools. Consequently, Jonesville Community Schools is a major provider of recreation facilities to the City as well as its students and boosters.

The Williams Elementary campus contains a variety of outdoor facilities. The Jonesville High School campus contains practice fields for football and soccer. The middle and high schools share the athletic facilities adjacent to Jonesville Middle School. All three schools have gymnasiums and are located in Jonesville.

### Jonesville Community Schools

	Name	Acres	Facilities
D	Williams Elementary	86.6	Playgrounds; Basketball; Gymnasium; & Track
E	Jonesville High School		Gymnasium & Football & Soccer Practice Fields
F	Jonesville Middle School	19.6	Gymnasium & Softball Field
G	Athletic Facilities		Football Field (lighted) & Baseball Field

The Michigan Department of Transportation (MDOT) is also a provider of recreation facilities. MDOT maintains a rest area along M-99 in Jonesville known as Hill-Jo Bicycle Park. MDOT's Hill-Jo Trail, runs through Jonesville, Fayette Township, and the City of Hillsdale along M-99. Within Hillsdale, it connects to the Baw Beese Trail.

### Michigan Department of Transportation

	Name	Acres	Facilities
H	Hill-Jo Bicycle Park	0.2	Picnic Tables
I	Hill-Jo Trail	5 mi	Biking/Walking/Jogging

A number of private and quasi-public institutions also provide recreation facilities within or near the City. For example, the Mill Race Golf Course, the Way-Back-In Campground, and the Jonesville Eagles provide easy access to important active recreation facilities. A community theater, a museum, and a public library are also available.

### Private / Quasi-Public Facilities

	Name	Acres	Facilities
J	Jonesville District Library	<0.1	Summer Reading Program; Video Rentals; & a 28,000 Volume Library
K	Mill Race Golf Course	72.3	9-Hole Course; Driving Range; Putting Green; Pro-Shop, Snack Bar; & Leagues
L	Jonesville Eagles	12.8	4 Softball Fields; Snack Bar; & Clubhouse



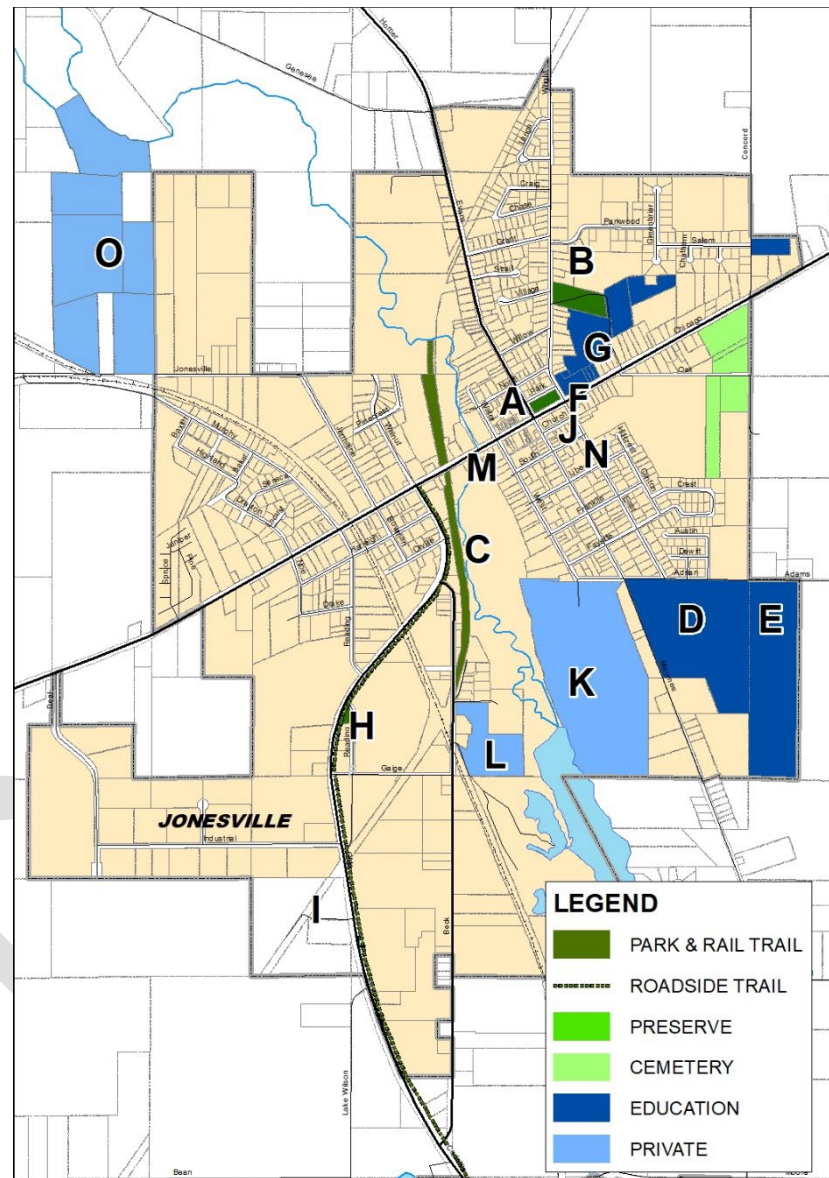
M	Sauk Theater	1.3	Community Amateur Theater
N	Grosvenor House Museum	0.3	Group Tours; Craft Shows; & Holiday Celebrations
O	Way-Back-In Campground	84.5	Campsites (RV, Tent, Cabins); Playground; Basketball; Trails; and Canoe Rental

### Park Standards and Types

A park and recreation plan should also recognize and use appropriate park standards. The National Recreation and Parks Association (NPRA) recommends a minimum of 10 acres per 1,000 persons. This means that Jonesville should have 21-22 acres of parkland in order to meet the needs of the population in 2022. The combined parkland and recreational facilities offered by public, quasi-public and private institutions exceed that standard. According to the NRPA, school facilities generally function as community parks.

Recreational facilities located on school grounds generally function as community parks. The City's Wright Street Park and Carl Fast Park function partially as community parks and partially as neighborhood parks. MDOT's roadside park, in general, functions as a mini-park. The various private and quasi-public facilities have a community-wide or even a regional function.



CITY OF  
JONESVILLE**RECREATION**



### Grant-Assisted Parks and Recreation Facilities

The following recreation grants were awarded to the City of Jonesville through the Michigan Department of Natural Resources.

Recreation Grant History			
Park Name	Proj. No.	Year	Usage
Wright Street Park	CM00-104	2000	The park is used on a daily basis
Jerry Russell Trail	TF13-037	2013	The trail was constructed during the summer of 2015

### Barrier-Free Access

It is important that the parks and recreation facilities operated by the City of Jonesville be accessible to people with disabilities. After all, 17.8 percent of all Jonesville residents had at least one disability in the year 2020. Accordingly, both of the city's parks and recreation facilities were also rated according to their level of barrier free access.<sup>1</sup> The number listed under the BFA column in those tables equates to the barrier-free rating listed below:

Barrier Free Access (BFA) Analysis	
Key	Description
1 =	None of the facilities/park areas meet accessibility guidelines
2 =	Some of the facilities/park areas meet accessibility guidelines
3 =	Most of the facilities/park areas meet accessibility guidelines
4 =	The entire park meets accessibility guidelines
5 =	The entire park was developed/renovated using the principal of universal design

### Regional Parks and Recreation Facilities

A variety of other public agencies and private entrepreneurs also provide recreational opportunities to Jonesville residents.

<sup>1</sup> The analysis of barrier free access was provided by the City of Jonesville, based upon its knowledge of the parks and understanding of barrier-free access. A professional analysis may produce different results.

## State Parks

The State of Michigan maintains a number of recreational facilities within the region. For example, the Department of Natural Resources (DNR) maintains the Lost Nation, Somerset, and Adams State Game Areas in Hillsdale County. Additional state game and recreation areas and state parks are located in neighboring counties. The DNR also maintains nine (9) boat launches in Hillsdale County.

### State of Michigan Recreational Facilities

#### State Parks

Cambridge Historical (Lenawee Co.)

Walter J. Hayes (Lenawee Co.)

#### State Game Areas

Adams (Mini) (Hillsdale Co.)

Sharonville (Jackson Co.)

Lost Nations (Hillsdale Co.)

Somerset (Hillsdale Co.)

Onsted (Lenawee Co.)

#### State Recreation Areas

Lake Hudson (Lenawee Co.)

Waterloo (Jackson Co.)

## County Parks

Hillsdale County also provides several regional recreational facilities which are accessible to Jonesville residents.

### Hillsdale County Parks

Bird Lake (Jefferson Twp.)

Cambria (Cambria Twp.)

Gateway (Hillsdale Twp.)

Hemlock Beach (Reading Twp.)

Lewis Emery (Hillsdale Twp.)

Sugar Bush

Lewis Emery County Park, the nearest facility to Jonesville, contains ponds and fishing docks, a community center, covered picnic shelters, playground equipment, and nature trails. Bird Lake Park contains a swimming beach and boat launch. The County Fairgrounds are located nearby in Hillsdale.

### City of Hillsdale Parks

The nearby City of Hillsdale also contains a variety of municipal parks. Together, they provide a wide variety of recreational facilities including: picnic areas, playgrounds and open areas, fishing access, a trail, and a variety of active recreational fields and courts.

#### City of Hillsdale Parks

Baw Beese Trail	Cold Springs Park
Field of Dreams	Kee Moose Park
Sam LoPresto Park	Orville Myer Parkway
Owen Memorial Park	Sandy Beach
Stocks Park	Waterworks Park

### Other Local Parks

Other local governments also provide parks and recreational facilities for their residents. Small cities and villages often provide a few recreation facilities. Townships may only provide one or two parks.

### Local Colleges

Jonesville residents can also avail themselves of the learning opportunities and recreational facilities and programs provided by nearby colleges. Hillsdale College contains Slayton Arboretum, which is open to the public, and serves as a venue for a variety of collegiate sports. Jackson College (JC) maintains a local presence in Hillsdale County through its Clyde LeTarte Center.

### Private and Quasi-Public Recreation Facilities

A wide variety of private entities also provide recreational facilities.

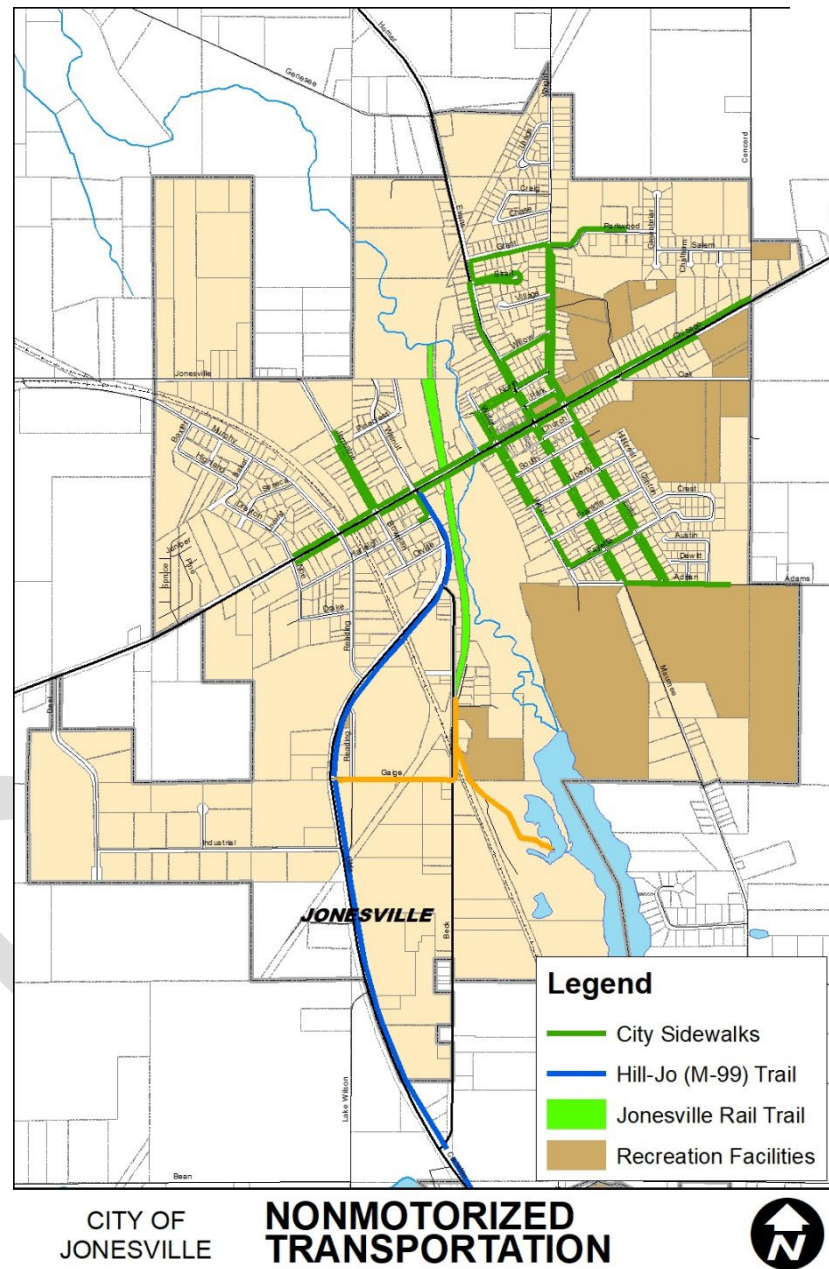
- **Golf Courses.** There are 16 golf courses within twenty miles of Jonesville, including the Mill Race Golf Course, according to [golflink.com](http://www.golflink.com).<sup>2</sup>
- **Bowling Alleys.** L & J Lanes is located on M-99 between Jonesville and Litchfield. The facility hosts pool tables, a game room and snack bar, softball fields, and sand volleyball pits in addition to bowling lanes. Hillside Lanes is located on M-99 in Hillsdale.

<sup>2</sup> <http://www.golflink.com/golf-courses/course-directory.aspx>

- **Other Recreation Facilities.** The Silos are located in Hillsdale along M-99. The Silos contains a video arcade, go-karts and bumper boats, miniature golf, and a driving range.
- **Shopping and Eating.** Many people enjoy shopping and going out to eat, making Downtown Jonesville a recreation destination with its restaurants and shops. The proximity of Jonesville to the commercial areas in Hillsdale and other nearby communities increases the opportunities for this type of activity.

### Sidewalks

Many of the main streets in the City of Jonesville include public sidewalks, which provide non-motorized access to some recreation facilities. The sidewalks also connect with the Hill-Jo Trail, providing non-motorized access to Hillsdale.



### National and State Historical Sites and Heritage Routes

Jonesville contains two historic sites that have state and national significance.<sup>3</sup>

National and State Historical Sites		
Structure	Address/Location	Registers*
Grace Episcopal Church	360 E. Chicago Street	NR SR HM
Grosvenor House	211 Maumee Street	NR SR HM
*NR = National Register ; SR = State Register; and HM = Historic Marker		



*Grosvenor House Museum | photo courtesy of US 12 Heritage Trail (Southwest Mich. Planning Comm.)*

<sup>3</sup> Michigan State Historic Preservation Office Historic

United States Highway 12 (US-12) was recognized as a Michigan Historic Heritage Route in 2004. The road began as a trail for mastodons and the Native Americans who hunted them approximately 10,000 years ago. The trail was converted into a federal highway—the second in the nation—in 1825.<sup>4</sup>

### Resource Inventory

Jonesville is home to a wide variety of cultural and natural resources.

### Recreational Programming

Jonesville and various institutions provide the following recreation programs to the general public.

Recreation Programs			
Program	Sponsor	Ages	Description
Youth Softball and Baseball	City of Jonesville	5-18	Softball and baseball programs are offered to City of Jonesville residents and non-residents. There are four girl, and five boy leagues.
Adult Softball	L & J Lanes	16+	Regular League Play.
Sports Camps	Jonesville Community Schools	8-18	A variety of sports camps for girls and boys are held by Jonesville Community Schools each summer.
Bowling	L & J Lanes	All	Regular League Bowling.
Theater	Sauk Theater	All	Amateur Productions.
Soccer	AYSO	4-14	Soccer program for boys and girls offered to residents of Hillsdale County.

<sup>4</sup> The information about the heritage route was gathered from [www.us12heritagetrail.org](http://www.us12heritagetrail.org)





*City youth recreation program | photo courtesy of City of Jonesville*

### **Jonesville Riverfest**

Riverfest is held annually on the 3rd weekend in May. The event, which began in 1974, “draws many people to [Jonesville] for the weekend with canoe races, [a] car show, music, food, and lots of fun” according to [www.jonesvilleriverfest.org](http://www.jonesvilleriverfest.org). Although Riverfest is nonprofit event, it would benefit from public access to the St. Joseph River within the city. A band shell located in or near Downtown Jonesville would also provide another music venue during the festival.

### **Soils**

The primary soil types within Jonesville are placed in the Fox-Boyer Association which is characterized as “nearly level to steep, very deep, well drained sandy loams and loamy sand outwash plains.”<sup>5</sup>

---

<sup>5</sup> All information is adapted from the Soil Survey of Hillsdale County, Michigan. Table 10 of the Soil Survey provides imitations for the development of camp areas, picnic areas, playgrounds, and paths and trails.



## Water Resources

The St. Joseph Watershed covers the City of Jonesville. The St. Joseph River flows through the city south to north and the Jonesville Mill Pond is an impoundment of the river (please see the hydrology map). Wetlands are located primarily along the peripheries of local rivers and streams. Unfortunately, public access points to any of these important resources are not located in Jonesville.

## Topography

The lowest areas of Jonesville are along the St. Joseph River, especially near the northwest corner of the city (elevations of 1,049 feet). The high points of Jonesville are located in its southwestern corner (elevations of 1,197 feet) and south of Adams Road (elevation of 1,230 feet), southeast of the city.

## Land Use

Commercial uses are clustered along US-12 and M-99, south of that corridor. The majority of industrial uses are located in the southwest corner of the City of Jonesville. Residential uses of various densities occupy the remainder of Jonesville.

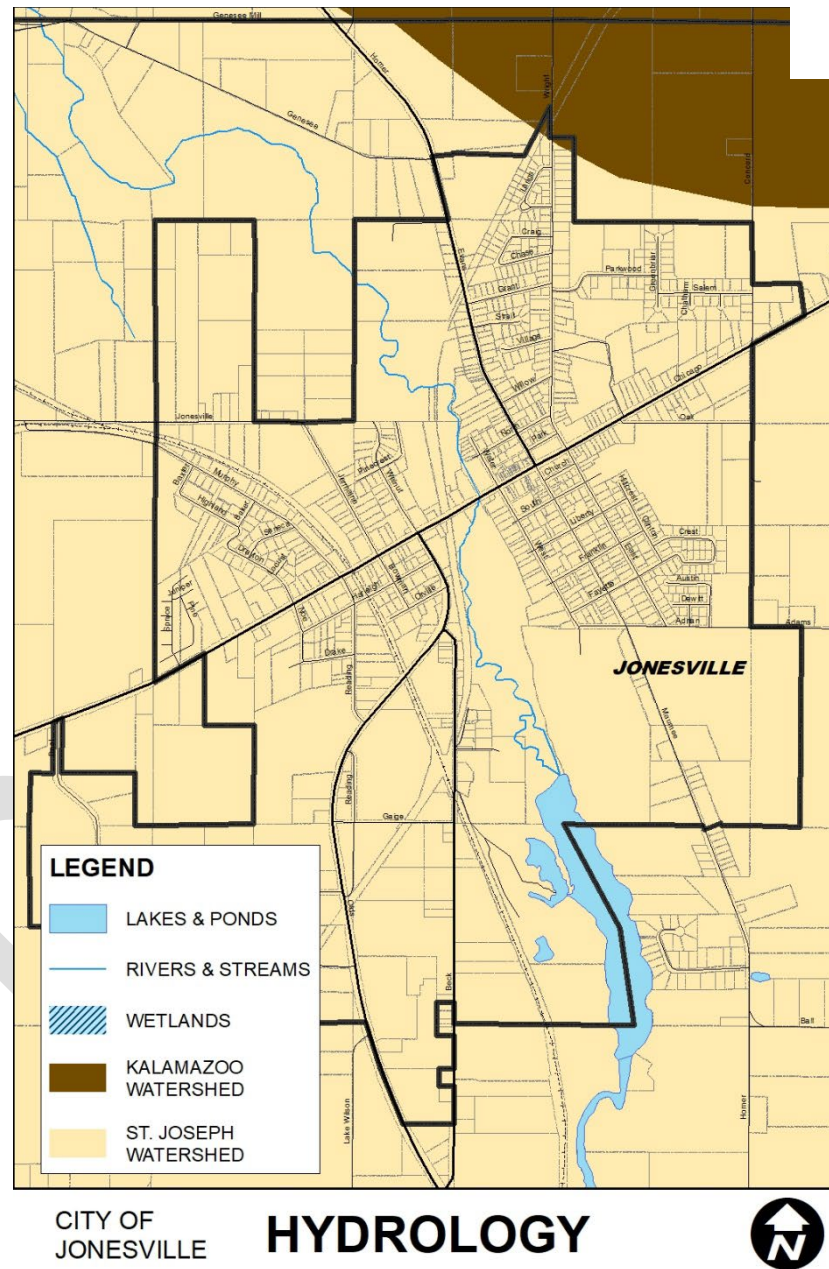
## Other Trail Planning Efforts

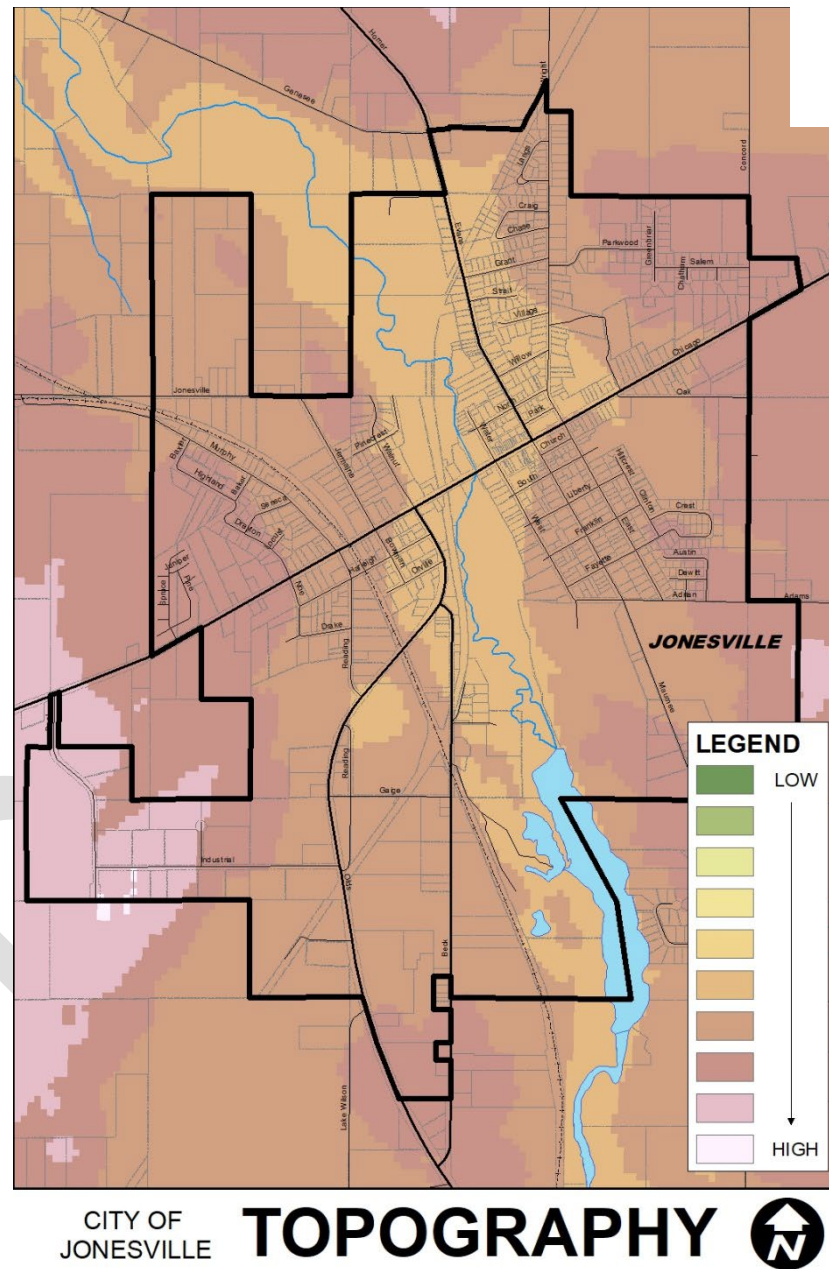
Several local, state, and national trail planning efforts also impact the Jonesville area:

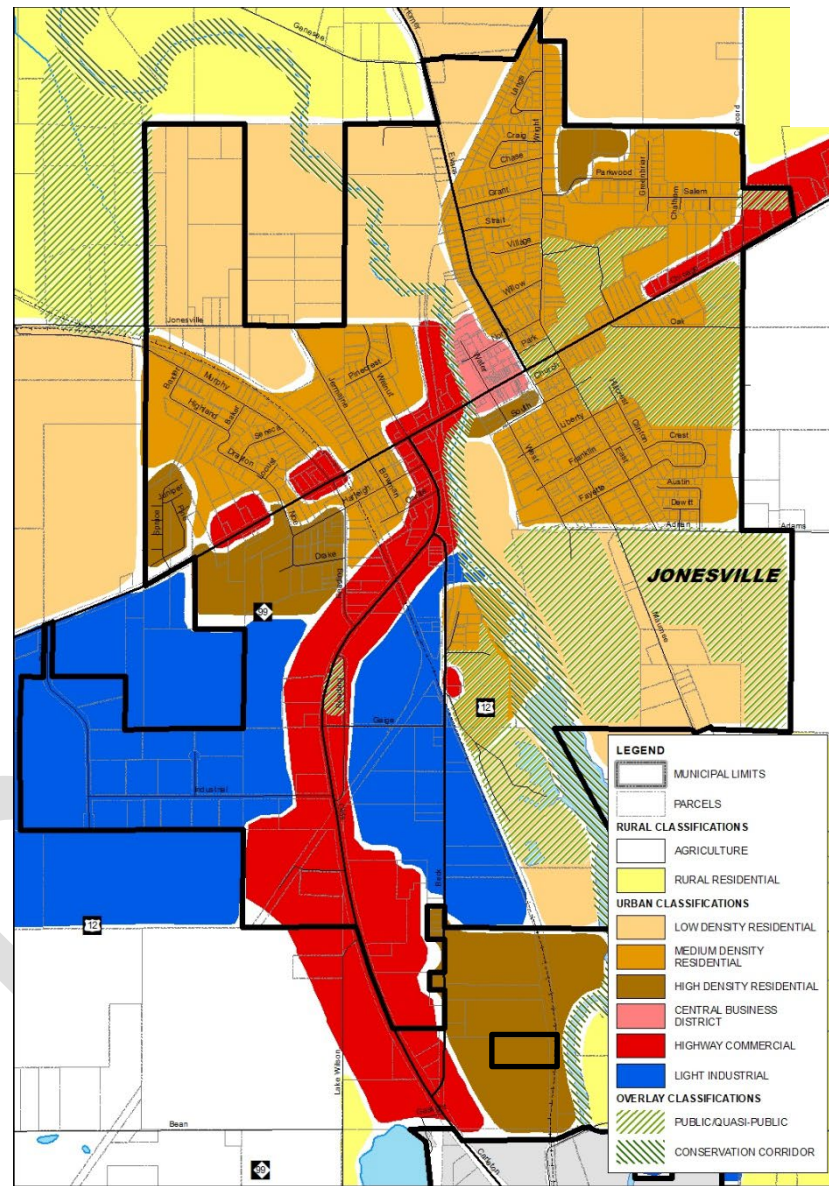
- Headwaters Recreational Authority
- Iron Belle Trail
- North Country National Scenic Trail

Summaries of those efforts are located in Appendix D.









CITY OF JONESVILLE **FUTURE LAND USE** 





## Chapter 4

# Descriptions of the Planning and Public Input Processes

City of Jonesville 2023-2028 Recreation Plan

## Description of the Planning Process

The development of the *City of Jonesville 2023-2028 Recreation Plan* included the following steps:

- The City of Jonesville recognized the need to update their Recreation Plan
- The City of Jonesville contracted with Region 2 Planning Commission to assist the Jonesville Planning Commission in the development of the 2023-2028 edition of the Recreation Plan
- The City of Jonesville Planning Commission conducted a survey of Jonesville Area residents, business owners, and park and recreation consumers
- Region 2 staff updated the community description; administrative structure; recreation and resource inventories; and descriptions of the planning and public input processes chapters of the Plan, including revised mapping, and reported the findings to the City of Jonesville Planning Commission
- The City of Jonesville Planning Commission utilized the input collected from the various public involvement efforts and the information produced by Region 2 staff to revise the goals and objectives and action program chapters of the Plan
- The City of Jonesville Planning Commission provided the Plan for public review from [REDACTED] through [REDACTED]
- The City of Jonesville Planning Commission held a public hearing on [REDACTED], approving the Plan and recommended adoption by the City Council and Township Board
- The City Council adopted the Recreation Plan on [REDACTED]



*Photo of Wright Street Park Public Input Session*

### **Description of the Public Input Process**

A variety of methods were employed to incorporate public input into the development of this Joint Recreation Plan:

- *City of Jonesville Planning Commission Meetings:*

All meetings of the planning commission are open to the public.

- *Public Input Session:*

The City of Jonesville Planning Commission and Region 2 Planning Commission staff planned and hosted a public input session at Wright Street Park on October 25, 2022, where they presented potential improvements for the park to community residents. The event consisted of five stations where Jonesville Planning Commission members and Region 2 staff fielded questions from residents about the recreation planning process and provided index cards so that participants could share their opinion on

proposed park improvements they would like to see. Eighteen comment cards were completed during the session. The responses from the public input session can be summarized as follows (please see Appendix B for a complete list of responses):

- *Public Input Responses:* The top responses from the public input session were:

- Fourteen people mentioned the potential addition of a dog park to Wright Street Park, making it the most popular suggestion, although two of the responses were not in favor of it.
- The need for more, or improved, parking at Wright Street Park was mentioned twelve times. Twelve people also mentioned the band shell as a potential addition to the park, although one of the responses was not in favor of it.
- Eleven suggestions were offered for a splash pad as well as for new, more, or improved or renovated playground equipment for the park.
- Pickleball was mentioned nine times, with six people offering it as a replacement for the Wright Street Park tennis courts and three people opposed to adding pickleball courts.
- Improved connectivity through the addition of new nonmotorized walking trails or sidewalks was suggested eight times.
- Additional suggestions from the public input session, each mentioned three times, included:
  - The need to resolve the restroom situation at Wright Street Park.
  - Update or expand the basketball courts.
  - Little free libraries at Wright Street Park and Carl Fast Park.
  - Beach volleyball.

- *Recreation Survey:*

An online survey was conducted throughout October and November 2022, supplemented by paper surveys. Using the responses from the previous Jonesville & Fayette Township Joint Recreation Plan as a supplement for general recreation survey questions, this survey was focused on pedestrian/bicycling behaviors to better understand non-motorized recreation within the city. The 146 responses can be summarized as follows (please see Appendix B for complete survey results):



- *The Respondents:* A good cross-section of Jonesville's (and beyond) population was represented:
  - Approximately 44 percent of respondents were patrons of City parks and recreation programs and approximately 85 percent were Jonesville (66%) or Hillsdale County (19%) residents.
  - Forty-one percent of respondents represented the age groups, 35-44 years old (26%) and 44-54 years old (15%), most likely to have children participating in the City's youth recreation programs. Approximately 22 percent of respondents were under the age of 18 and 25 percent were 55 years or older, both demographics who might require particular focus when planning recreation opportunities.
- *Visiting Area Parks, Pedestrian & Biking Patterns:* Most respondents were active area parks and recreation consumers:
  - Thirty-six percent of survey respondents reported visiting an area park more than 15 times in the past year and an additional 54 percent visited a park between one and twelve times during the same time period.
  - Respondents reported regularly walking and/or biking in Jonesville, with 37 percent choosing to walk or bike more than 15 times in the last year. Fifty-three percent chose to walk or bike at least once a month.
  - Exercise (73%) was the top reason given for walking or biking, with leisure (68%) and socializing (38%) also ranking highly.
- *Pedestrian and Biking Infrastructure Needs:* The consensus of respondents was that the City should concentrate on improving existing, and adding new, pedestrian infrastructure:
  - More than two-thirds of respondents (68%) felt that more multi-use paths would increase pedestrian activity in the City, while sixty-one percent thought additional sidewalks, or improvements to existing sidewalks, would be beneficial. Survey respondents also made note of potential roadway safety changes that would benefit pedestrian connectivity with twenty-nine percent citing additional road crossing opportunities or improvements and 26 percent mentioning a desire for traffic calming to slow vehicle speeds.
  - Undesirable, or lack of, facilities and paths (45%), poor surface conditions (35%), and unsafe crossings (28%) were all identified as obstacles that prevent respondents from walking or biking within the City.
  - Approximately 68 percent of respondents stated that they would walk and/or bike more if the identified obstacles were addressed and improvements were implemented. Only five percent responded that, even with these issues addressed or improvements in place, they would not increase their pedestrian activity.

- *Jonesville Recreation Programs:* Youth softball and baseball programs are important elements of the City's recreation program:
  - Thirty percent of respondents had a member of their household participating in these programs, although this survey was administered when the softball and baseball programs were not in season.

- *Stakeholder Interviews:*

Fifteen community stakeholders were identified for interviews regarding parks and recreation facilities and programming in Jonesville. Seven stakeholder interviews were conducted in April and May 2023 covering fourteen questions. A list of invited stakeholders along with anonymous responses can be found in Appendix B. Among the highlights:

- *Jonesville Youth Softball and Baseball Programs:*
  - Interviewees spoke very highly of these programs but there was a recognition that the fields could use some updating or even the addition of a third field due to the heavy use of the existing fields.
- *Improvements to Wright Street Park:*
  - Redevelopment of the tennis courts at Wright Street Park was discussed with interviewees offering up pickleball, permanent concrete cornhole boards, and parking as potential uses for that section of the park.
  - Improved parking at Wright Street Park was mentioned frequently by interviewees.
  - Other changes to the park mentioned by the stakeholders were the addition of a dog park and improved nonmotorized trails through the park and the City.
- *Nonmotorized Trails:*
  - Interviewees were in favor of more and improved nonmotorized trails throughout the community.
  - Adding bodyweight exercise stations to a segment of trails, specifically in Wright Street Park, was suggested.

### One Month Review Period

The *City of Jonesville 2023-2028 Recreation Plan* was submitted for public comment beginning on [REDACTED] and ending on [REDACTED]. The plan was available for review in the City offices as well as the Jonesville District Library. The Recreation Plan was also available for review online at [www.jonesville.org](http://www.jonesville.org). Members of the City of Jonesville Planning Commission briefed local civic organizations during the comment period. No comments were submitted to the City of Jonesville Planning Commission.

### Public Hearing

A public hearing on the *City of Jonesville 2023-2028 Recreation Plan* was held on [REDACTED] at 7:00 pm in City Hall, during a meeting of the City of Jonesville Planning Commission. The hearing took place prior to the vote on the resolution recommending adoption of the Plan by the Jonesville City Council. [REDACTED] comments were made during the public hearing.

### Hillsdale County and the Region 2 Planning Commission

The City must provide a copy of the *City of Jonesville 2023-2028 Recreation Plan* to Hillsdale County and the Region 2 Planning Commission. The Plan was transmitted to them on [REDACTED].



*Public Input Session | photo courtesy of City of Jonesville*